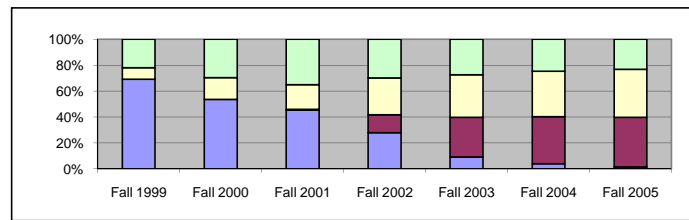


# University of North Alabama

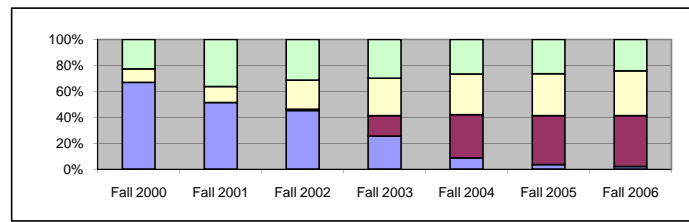
## Freshman Cohort Retention, Graduation, and Transfer Rates

### Fall 1998 to Fall 2005

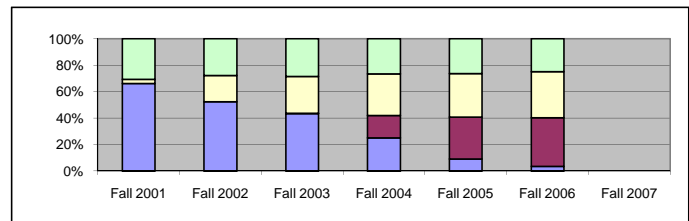
<b>FALL 1998 FRESHMEN</b> N=846	Fall 1999	Fall 2000	Fall 2001	Fall 2002	Fall 2003	Fall 2004	Fall 2005
Enrolled	585	454	385	237	79	34	14
Have Graduated	0	0	5	118	259	307	324
Have Transferred	76	143	161	240	277	298	312
Not Enrolled	185	249	295	251	231	207	196
Retention Rate	9.0%	16.9%	19.0%	28.4%	32.7%	35.2%	36.9%
*Grad. Rate w/o Transfers	0.0%	0.0%	0.7%	19.5%	45.5%	56.0%	60.7%
Not Enrolled Rate	21.9%	29.4%	34.9%	29.7%	27.3%	24.5%	23.2%



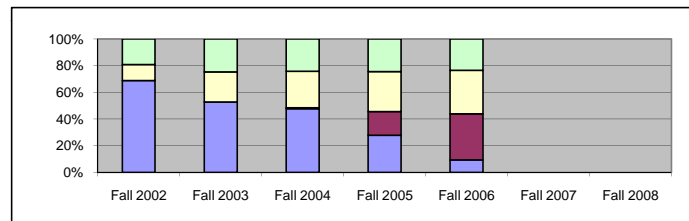
<b>FALL 1999 FRESHMEN</b> N=809	Fall 2000	Fall 2001	Fall 2002	Fall 2003	Fall 2004	Fall 2005	Fall 2006
Enrolled	542	417	367	207	72	30	17
Have Graduated	0	0	8	127	268	304	317
Have Transferred	85	100	181	235	254	262	281
Not Enrolled	182	292	253	240	215	213	194
Retention Rate	67.0%	51.5%	45.4%	25.6%	8.9%	3.7%	2.1%
Graduation Rate	0.0%	0.0%	1.0%	15.7%	33.1%	37.6%	39.2%
Transfer Rate	10.5%	12.4%	22.4%	29.0%	31.4%	32.4%	34.7%
*Grad. Rate w/o Transfers	0.0%	0.0%	1.3%	22.1%	48.3%	55.6%	60.0%
Not Enrolled Rate	22.5%	36.1%	31.3%	29.7%	26.6%	26.3%	24.0%



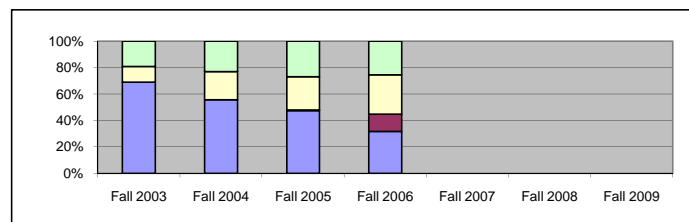
<b>FALL 2000 FRESHMEN</b> N=841	Fall 2001	Fall 2002	Fall 2003	Fall 2004	Fall 2005	Fall 2006	Fall 2007
Enrolled	557	440	365	210	76	29	
Have Graduated	0	0	3	143	268	310	
Have Transferred	27	168	234	265	276	293	
Not Enrolled	257	233	239	223	221	209	
Retention Rate	66.2%	52.3%	43.4%	25.0%	9.0%	3.4%	
Graduation Rate	0.0%	0.0%	0.4%	17.0%	31.9%	36.9%	
Transfer Rate	3.2%	20.0%	27.8%	31.5%	32.8%	34.8%	
*Grad. Rate w/o Transfers	0.0%	0.0%	0.5%	24.8%	47.4%	56.6%	
Not Enrolled Rate	30.6%	27.7%	28.4%	26.5%	26.3%	24.9%	



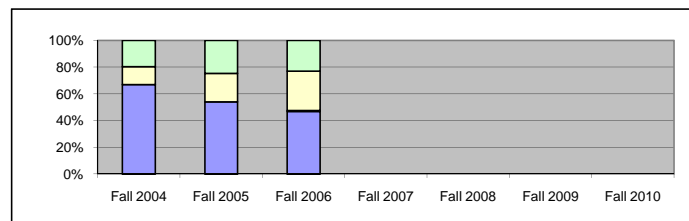
<b>FALL 2001 FRESHMEN</b> N=829	Fall 2002	Fall 2003	Fall 2004	Fall 2005	Fall 2006	Fall 2007	Fall 2008
Enrolled	572	439	396	231	78		
Have Graduated	0	0	6	147	287		
Have Transferred	99	187	228	250	271		
Not Enrolled	158	203	199	201	193		
Retention Rate	69.0%	53.0%	47.8%	27.9%	9.4%		
Graduation Rate	0.0%	0.0%	0.7%	17.7%	34.6%		
Transfer Rate	11.9%	22.6%	27.5%	30.2%	32.7%		
*Grad. Rate w/o Transfers	0.0%	0.0%	1.0%	25.4%	51.4%		
Not Enrolled Rate	19.1%	24.5%	24.0%	24.2%	23.3%		



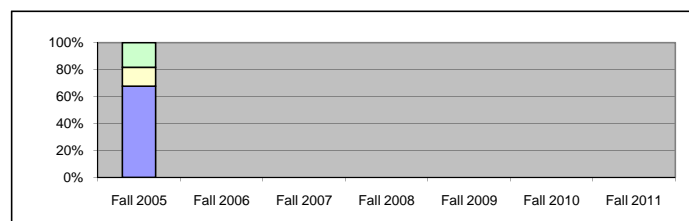
<b>FALL 2002 FRESHMEN</b> N=790	Fall 2003	Fall 2004	Fall 2005	Fall 2006	Fall 2007	Fall 2008	Fall 2009
Enrolled	546	441	375	251			
Have Graduated	0	0	4	104			
Have Transferred	94	168	199	235			
Not Enrolled	150	181	212	200			
Retention Rate	69.1%	55.8%	47.5%	31.8%			
Graduation Rate	0.0%	0.0%	0.5%	13.2%			
Transfer Rate	11.9%	21.3%	25.2%	29.7%			
*Grad. Rate w/o Transfers	0.0%	0.0%	0.7%	18.7%			
Not Enrolled Rate	19.0%	22.9%	26.8%	25.3%			



<b>FALL 2003 FRESHMEN</b> N=803	Fall 2004	Fall 2005	Fall 2006	Fall 2007	Fall 2008	Fall 2009	Fall 2010
Enrolled	538	434	377				
Have Graduated	0	0	6				
Have Transferred	107	171	236				
Not Enrolled	158	198	184				
Retention Rate	67.0%	54.0%	46.9%				
Graduation Rate	0.0%	0.0%	0.7%				
Transfer Rate	13.3%	21.3%	29.4%				
*Grad. Rate w/o Transfers	0.0%	0.0%	1.1%				
Not Enrolled Rate	19.7%	24.7%	22.9%				



<b>FALL 2004 FRESHMEN</b> N=856	Fall 2005	Fall 2006	Fall 2007	Fall 2008	Fall 2009	Fall 2010	Fall 2011
Enrolled	580						
Have Graduated	0						
Have Transferred	121						
Not Enrolled	155						
Retention Rate	67.8%						
Graduation Rate	0.0%						
Transfer Rate	14.1%						
*Grad. Rate w/o Transfers	0.0%						
Not Enrolled Rate	18.1%						



\* Grad. Rate w/o Transfers is calculated using the cumulative graduates through that semester divided by the number in the original cohort with transfer-outs removed.